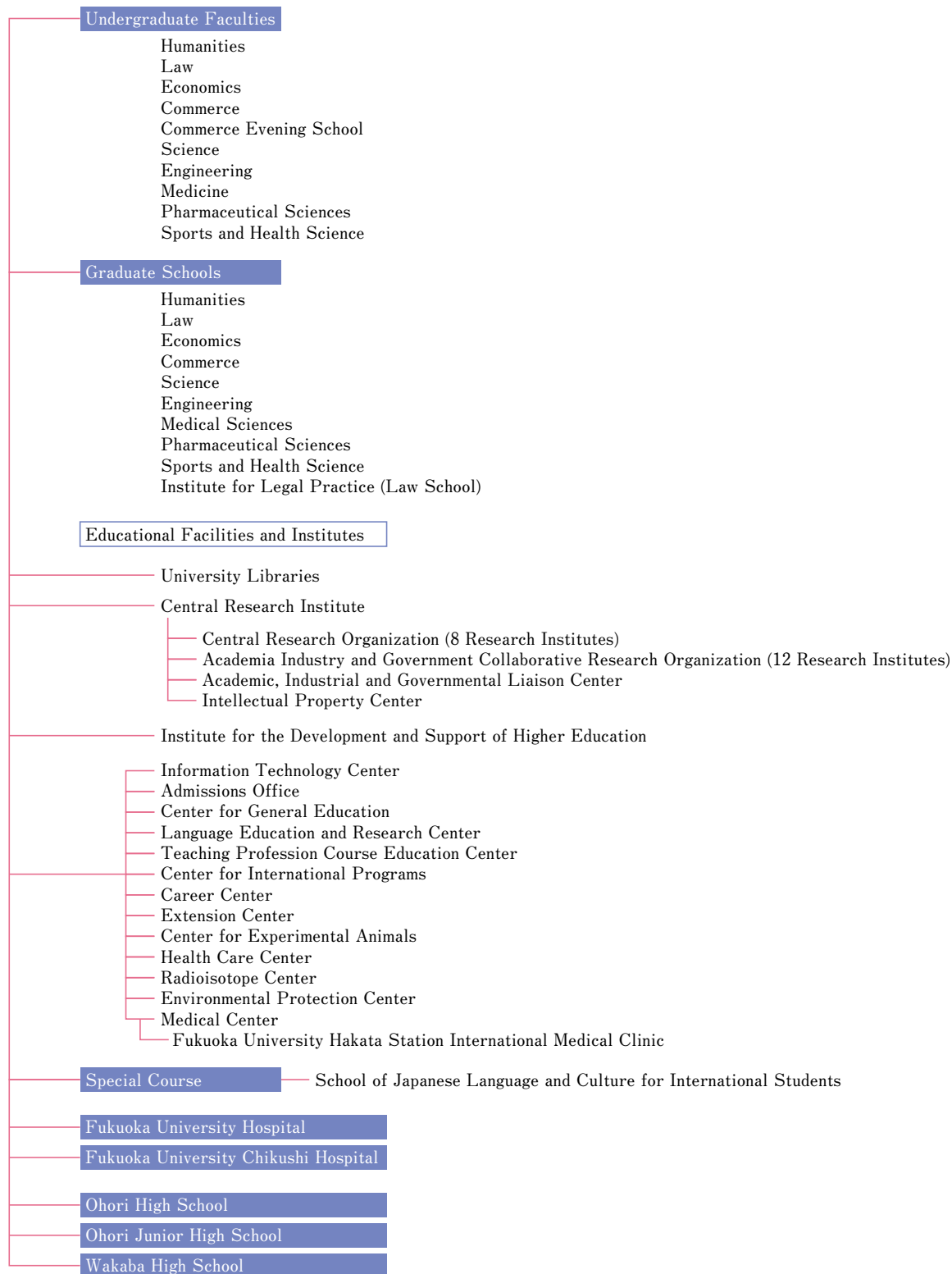


Fukuoka University Facts and Figures

University organization



History

Fukuoka University traces its origins back to 1934 when Fukuoka Higher Commercial School was established under the prewar education system. It was renamed Kyushu College of Economics in 1944, and two years later it became Fukuoka College of Economics. In 1949, as part of the restructured postwar education system, it was reestablished as Fukuoka College of Commerce. Finally, when the Faculty of Law and Economics was established at the college in 1956, its name was changed to Fukuoka University. Since then, Fukuoka University has become one of the largest universities in western Japan, adding new faculties and graduate schools as shown in the charts.

Undergraduate Faculties

1949	Commerce
1959	Law Economics (Reorganized from the Faculty of Law & Economics)
1960	Pharmaceutical Sciences
1962	Engineering
1969	Humanities Physical Education
1970	Science
1972	Medicine
1998	Sports and Health Science (Reorganized from the Faculty of Physical Education)

Graduate Schools

1965	Law Economics
1968	Commerce Pharmaceutical Sciences
1970	Engineering
1976	Science
1978	Medical Sciences
1982	Humanities
1990	Physical Education
2003	Sports and Health Science (Reorganized from the Graduate School of Physical Education)
2004	Institute for Legal Practice (Law School)

Student Enrollment

Undergraduate Faculties

Faculty	Number
Humanities	2,455 (1,757)
Law	2,783 (1,030)
Economics	2,810 (800)
Commerce	2,893 (1,282)
Commerce Evening School	722 (159)
Science	1,051 (301)
Engineering	2,946 (373)
Medicine	1,106 (650)
Pharmaceutical Sciences	1,486 (1,017)
Sports and Health Science	1,272 (392)
Total	19,524 (7,761)

Graduate Schools

(As of 1 May 2016)
Number of women shown in parentheses

Graduate School	Master's Course	Doctoral Course	Total
Humanities	74 (45)	22 (14)	96 (59)
Law	18 (6)	3 (1)	21 (7)
Economics	20 (10)	4 (1)	24 (11)
Commerce	24 (11)	8 (3)	32 (14)
Science	68 (20)	6 (2)	74 (22)
Engineering	131 (19)	10 (1)	141 (20)
Medical Sciences	4 (4)	121 (37)	125 (41)
Pharmaceutical Sciences	5 (4)	13 (1)	18 (5)
Sports and Health Science	20 (5)	14 (6)	34 (11)
Subtotal	364 (124)	201 (66)	565 (190)
Institute for Legal Practice	Professional Degree Program		17 (7)
Total			582 (197)

Students Total 20,106 (7,958)

Alumni

Undergraduate Faculties

Faculty	2015-16	Total
Humanities	535	15,567
Law	612	42,444
Economics	608	45,032
Commerce	623	51,177
Commerce Evening School	148	13,643
Science	244	8,366
Engineering	646	33,175
Medicine	214	4,629
Pharmaceutical Sciences	237	10,512
Sports and Health Science	276	10,498
Total	4,143	235,043
Institutions prior to Fukuoka University		
		10,332

Graduate Schools

(As of 31 March 2016)

Graduate School	Master's Course		Doctoral Course	
	2015-16	Total	2015-16	Total
Humanities	38	787	9	171
Law	8	396	0	51
Economics	21	667	4	95
Commerce	14	594	2	107
Science	41	1,132	1	75
Engineering	81	1,641	4	40
Medical Sciences	1	17	20	716
Pharmaceutical Sciences	1	808	5	103
Sports and Health Science	17	368	2	28
Subtotal	222	6,410	47	1,386
Institute for Legal Practice	Professional Degree Program		9	154
Total			278	7,950

Alumni Total 253,325

Career Paths after Graduation

Undergraduate Faculties

(As of 1 May 2016)

Faculty	Graduate School	Employment	Residency	Other	Total
Humanities	29	406	—	100	535
Law	6	479	—	127	612
Economics	3	506	—	99	608
Commerce	5	505	—	113	623
Commerce Evening School	2	98	—	48	148
Science	41	162	—	41	244
Engineering	78	523	—	45	646
Medicine	Medicine		107		107
	Nursing	103	—	4	107
Pharmaceutical Sciences	6	208	—	23	237
Sports and Health Science	13	207	—	56	276
Total	183	3,197	107	656	4,143

Graduate Schools

(As of 1 May 2016)

Graduate School	Master's Course				Doctoral Course			
	Doctoral Program	Employment	Other	Total	Post-doctoral studies	Employment	Other	Total
Humanities	3	26	9	38		8	1	9
Law	1	5	2	8				
Economics		7	14	21		1	3	4
Commerce		12	2	14			2	2
Science	5	31	5	41		1		1
Engineering	1	73	7	81		4		4
Medical Sciences		1		1		18	2	20
Pharmaceutical Sciences			1	1		5		5
Sports and Health Science	2	14	1	17		2		2
Subtotal	12	169	41	222	0	39	8	47
Institute for Legal Practice	Professional Degree Program				0	0	9	9
Total					12	208	58	278

Note: "Other" includes students preparing for employment, additional education, and examinations for public service, teaching positions, and national qualifications.

International Students

By Country or Region

(As of 1 May 2016)
Number of women shown in parentheses

Country or region	Under-graduate students	Graduate School students			Research students	Exchange students	School of Japanese Language and Culture	Total
		Master's Course	Doctoral Course	Law School				
China	58 (21)	35 (20)	13 (5)		19 (13)	10 (10)	50 (33)	185 (102)
Korea	10 (4)	1	1 1			23 (10)	4 (2)	39 [1](17)
Taiwan	2	1 (1)				4 (4)	2 (1)	9 (6)
Hong Kong	1							1 (0)
Indonesia	1		1					2 (0)
Vietnam	1 (1)	1			1 (1)	2 (2)	6 (4)	11 (8)
Malaysia	2 (1)							2 (1)
Mongolia			1 (1)					1 (1)
UK	2		1			3 (3)		6 (3)
France						3 (2)		3 (2)
Spain						1		1 (0)
Germany						4 (4)		4 (4)
Total	77 (27)	38 (21)	17 [1](7)	0	20 (14)	50 (35)	62 (40)	264 [1](144)

Numbers in square brackets indicate international students on national scholarships.

By Faculty or School

(As of 1 May 2016)
Number of women shown in parentheses

Faculty or School	Under-graduate students	Graduate School students			Research students	Exchange students	School of Japanese Language and Culture	Total
		Master's Course	Doctoral Course	Law School				
Humanities	10 (5)	2 (2)	1 (1)		2 (2)	42 (31)	57 (41)	
Law	1 (1)	3 (2)				1	5 (3)	
Economics	10 (4)	14 (9)	4 1		10 (8)		38 [1](22)	
Commerce	43 (16)	12 (8)	5 (3)		5 (4)	3 (2)	68 (33)	
Science	2					1	3 (0)	
Engineering	10 (1)	7	3		3	2 (1)	25 (2)	
Medicine	1		4 (2)				5 (2)	
Pharmaceutical Sciences							0 (0)	
Sports and Health Science							0 (0)	
Law School							0 (0)	
School of Japanese Language and Culture						62 (40)	62 (40)	
Total	77 (27)	38 (21)	17 [1](7)	0	20 (14)	50 (35)	62 (40)	264 [1](144)

Numbers in square brackets indicate international students on national scholarships.

Teaching Staff

(As of 1 May 2016)
Number of women shown in parentheses

Teaching Staff	Professors	Associate professors	Senior lecturers	Assistant lecturers	Research assistants	Total
Humanities	84 (14)	35 (8)	9 (3)		2	130 (25)
Law	23 (4)	11 (2)	3 (1)			37 (7)
Economics	23 (4)	11 (1)	3			37 (5)
Commerce	32	12 (2)	2 (2)	1		47 (4)
Science	39	15	1	44 (5)	4 (4)	103 (9)
Engineering	55 (1)	14	1	56 (8)	19 (4)	145 (13)
Medicine	55 (8)	36 (14)	50 (16)	75 (25)	6 (3)	222 (66)
Pharmaceutical Sciences	22 (1)	19	5 (3)	34 (11)	7 (3)	87 (18)
Sports and Health Science	25 (1)	1 (1)	6 (1)	16 (1)	10 (6)	58 (10)
Institute for Legal Practice	10 (2)	2			1	13 (2)
Fukuoka University Hospital	5	9 (2)	50 (4)	106 (28)	171 (52)	341 (86)
Fukuoka University Chikushi Hospital	12	10	21 (3)	41 (9)	59 (17)	143 (29)
Language Education and Research Center, Others	8 (1)	8 (2)	27 (14)	4 (3)	1	48 (20)
Total	393 (36)	183 (32)	178 (47)	377 (90)	280 (89)	1,411 (294)

Non-Teaching Staff

Fukuoka University	581 (302)
Fukuoka University Hospital	1,442 (1,215)
Fukuoka University Chikushi Hospital	537 (455)
Total	2,560 (1,972)

International Teaching Staff

(As of 1 May 2016)
Number of women shown in parentheses

Country or region	Professors	Associate professors	Senior lecturers	Assistant lecturers	Research assistants	Total
China	5 (1)	1	3 (2)	4		13 (3)
South Korea	1		2 (2)	3		6 (2)
Taiwan			1 (1)			1 (1)
North Korea				1		1 (0)
Philippines			1			1 (0)
Thailand				1 (1)		1 (1)
Australia	1	1	3 (1)			5 (1)
New Zealand			1			1 (0)
UK	2 (1)	1	2 (1)			5 (2)
France	1	1				2 (0)
Germany		1 (1)	2 (1)			3 (2)
Belgium	1 (1)					1 (1)
Moldova	1					1
Spain	1					1 (0)
Ireland			1			1 (0)
USA	3 (1)	2	2	1		7 (1)
Canada		1	1			2 (0)
Total	16 (4)	7 (1)	19 (8)	10 (1)	0	52 (14)

Fukuoka University's Partner Institutions

20 countries and regions, 59 universities and one other institution

(As of 1 May 2016)

Country or region	Institution	Date of agreement	
Korea	University of Ulsan	6 Dec. 1990	
	Pusan National University	4 Dec. 2000	
	Ewha Womans University	4 Sept. 2001	
	Dong-eui University	29 March 2002	
	Korea University	25 Oct. 2002	
	Keimyung University	18 Dec. 2006	
	University of Incheon	27 May 2010	
	Dong-A University	2 June 2010	
	Dongseo University	29 June 2010	
	Kyung Hee University	19 Aug. 2011	
	Pukyong National University	10 Apr. 2012	
	Dongguk University, Gyeongju	19 July 2013	
	Kookmin University	13 Nov. 2013	
	Pai Chai University	18 Sept. 2015	
Asia and Oceania	China	East China Normal University	30 Aug. 2000
		China University of Political Science and Law	9 July 2001
		Yangzhou University	21 Jan. 2002
		Yantai University	1 Aug. 2002
		Guangzhou University	22 June 2007
		Central University of Finance and Economics	21 Nov. 2008
		Northeast Forestry University	8 Apr. 2011
		Harbin Normal University	25 Apr. 2011
		Heilongjiang University	28 Sept. 2011
		Harbin University of Science and Technology	7 Sept. 2012
		Harbin University of Commerce	8 Sept. 2012
		Xi'an Jiaotong University	25 July 2013
		Northwest University	23 Sept. 2013
		Chang'an University	12 May 2015
	National Judges College	13 Sept. 2005	
	Taiwan	Fu Jen Catholic University	30 May 2001
		National University of Kaohsiung	1 Apr. 2012
		Ming Chuan University	25 June 2015
	Philippines	De La Salle University	9 Aug. 2002
Indonesia	Gadjah Mada University	1 Feb. 2002	
	Padjadjaran University	26 Oct. 2012	
Vietnam	Hanoi University	29 Aug. 2013	
	The University of DaNang	22 Oct. 2013	
Cambodia	Royal University of Phnom Penh	24 July 2015	
Malaysia	Sultan Idris Education University	17 May 2010	
Nepal	Tribhuvan University	12 Oct. 2001	
Australia	Griffith University	28 Nov. 1991	

Country or region	Institution	Date of agreement	
Europe	UK	Newcastle University	28 June 1986
		University of Leeds	11 Dec. 1990
		University of Bath	8 June 2003
	France	University Paris Diderot-Paris7	21 Dec. 2006
		Lyon Institute of Political Studies	20 Nov. 2012
		The University of Cergy-Pontoise	22 Nov. 2012
	Belgium	Catholic University of Louvain	25 June 1997
		The University of Liege	1 July 2013
	Germany	Friedrich Schiller University of Jena	25 June 2009
		University of Duisburg Essen	24 June 2015
	Spain	University of Valencia	22 Feb. 2011
Italy	University of Padova	24 July 2002	
Turkey	Pamukkale University	10 Aug. 2009	
Finland	University of Tampere	19 Apr. 2011	
North and South America	USA	Washburn University of Topeka	1 Oct. 1984
		University of Kansas	9 Jan. 1988
		Georgia Institute of Technology	31 July 1995
		Seattle University	18 Feb. 2016
	Brazil	Federal University of Santa Catarina	11 Jan. 2002

Tuition and other fees

Undergraduate Faculties

(Unit: yen)

Faculty	Admission fee	Tuition and other fees (annual)
Humanities, Law, Economics, Commerce	190,000	840,000
Commerce Evening School	60,000	390,000
Science, Engineering	240,000	1,280,000
Medicine (Medicine)	(1 st year)	1,000,000
	(2 nd -3 rd years)	—
	(4 th year and above)	4,600,000
Medicine (Nursing)	270,000	1,400,000
Pharmaceutical Sciences	(1 st year)	400,000
	(2 nd year and above)	—
Sports and Health Science	300,000	1,060,000

Note: The Faculties of Medicine and Pharmaceutical Sciences are 6-year courses, and all other faculties are 4 years.

Graduate Schools

(Unit: yen)

Master's Course	Admission fee	Tuition and other fees (annual)
Humanities, Law, Economics, Commerce	200,000	590,000
Science, Engineering, Pharmaceutical Sciences (Pharmaceutical Health Science)	240,000	770,000
Medical Sciences (Nursing)	240,000	610,000
Sports and Health Science	240,000	700,000

Doctoral Course	Admission fee	Tuition and other fees (annual)
Humanities, Law, Economics, Commerce	200,000	520,000
Science, Engineering, Medical Sciences, Pharmaceutical Sciences	240,000	700,000
Sports and Health Science	240,000	640,000

Note: The Master's course is a 2-year course for all Graduate Schools, and the Doctoral course a 3-year course for all Graduate Schools except Medical Sciences and Pharmaceutical Sciences, which are 4-year courses.

Institute for Legal Practice (Law School)

(Unit: yen)

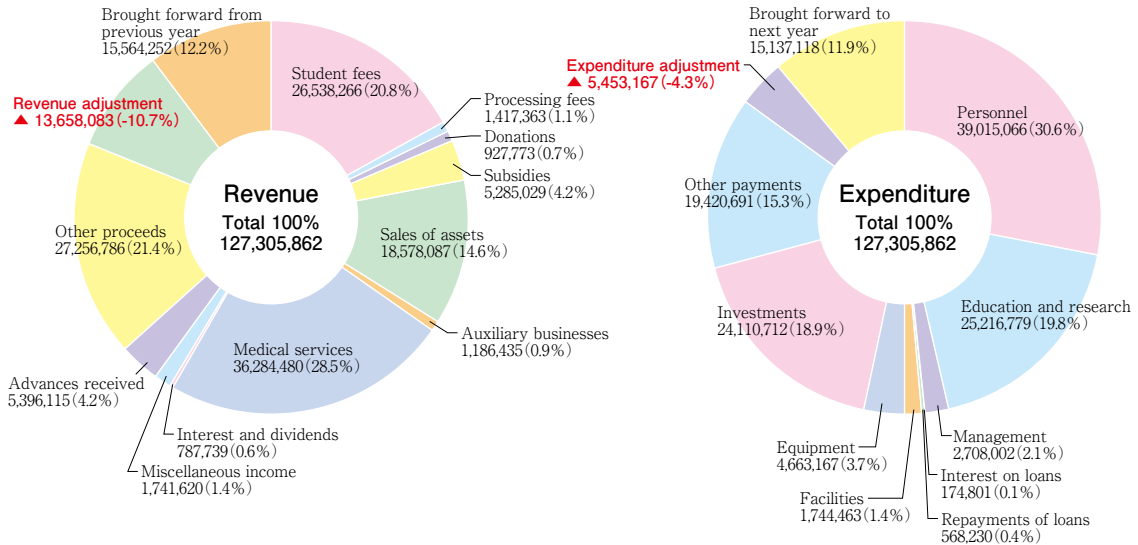
Professional Degree Program	Admission fee	Tuition and other fees (annual)
Legal Practice	110,000	720,000

Note: The standard course is a 3-year course (2 years for practitioners).

Note: Applies to students entering the University in the 2016 academic year.
In addition to the above, special annual fees (Undergraduate: 26,710 yen; Graduate School and Institute for Legal Practice: 18,100 yen) will be collected under consignment.

(Unit: 1000 yen)

Fiscal 2015 cash flow statement



Balance Sheet as of 31 March 2016

(Unit: 1000 yen)

Assets	Amount	Liabilities	Amount
Non-current assets	211,534,570	Non-current liabilities	26,390,614
Property, plant and equipment	123,741,158	Long-term loans payable	7,690,550
Land	20,265,316	Long-term accounts payable	362,164
Buildings	67,732,948	Provision for retirement benefits	18,337,900
Structures	4,504,397	Current liabilities	12,348,612
Educational and research equipment	13,937,780	Short-term loans payable	568,150
Management equipment	207,347	Short-term accounts payable	5,137,834
Books	16,137,865	Advances received	5,396,115
Vehicles	14,184	Deposits received	1,245,633
Land acquisition advances	9,770	Suspense receipt	880
Construction in progress	931,551		
Special assets	83,688,899	Liabilities total	38,739,226
Special allowance for No. 2 Basic assets	14,276,403		
Special allowance for No. 3 Basic assets	2,353,879		
Special allowance for No. 4 Basic assets	5,220,000		
Other special assets	61,838,617		
Other non-current assets	4,104,513	Net Assets	Amount
Telephone subscription rights	136,291	Basic assets*	214,381,396
Investments in capital of profit-earning operations	829,693	No. 1 Basic assets	192,531,114
Loans receivable	19,942	No. 2 Basic assets	14,276,403
Scholarship loans receivable	2,939,933	No. 3 Basic assets	2,353,879
Deposits paid	71,633	No. 4 Basic assets	5,220,000
Guarantee deposits	50,940		
Long-term advance payments	56,081	*Acquisition value of non-current assets and others	
Current assets	24,766,986	Adjustments brought forward	▲ 16,819,066
Cash and deposits	15,137,118	Adjustments brought forward to next year	▲ 16,819,066
Accounts receivable	8,675,456		
Materials	151,563		
Supplies	6,957		
Advances paid	36,275		
Short-term advance payments	610,703		
Suspense payments	148,914	Net Assets total	197,562,330
Assets total	236,301,556	Liabilities and Net Assets total	236,301,556